



MCHS News

September 2018

Opening Doors to Madison County History

Vol. 6 No. 5

Historical Museum
715 N Main Street
Edwardsville, IL 62025

Hours:
The museum is currently closed for renovation

Archival Library
801 N Main Street
Hours:
Wed-Fri 9 am - 4 pm
Sunday 1 pm - 4 pm
Group Tours Available

Phone:
618-656-7569

Web Address:
madcohistory.org

E-mail:
info@madcohistory.org

About Us:
The MCHS museum complex, consisting of a modern archival library, a museum in the 1836 Weir House and the Helms Collection Center, is owned by the nonprofit Madison County Historical Society and operated jointly with Madison County.

The Madison County Historical Society is a 501(c)(3) charitable organization.

A HISTORY OF ST. BONIFACE CATHOLIC CHURCH

The Beginning - 1866-1873

The German Catholics in Edwardsville began planning for a church of their own in the 1860s. By 1866, the Rev. William Kuchenbuch, the pastor of the Church of the Immaculate Conception in Edwardsville (St. Mary's), advised them to purchase the ground needed, which they did in 1866. The German parishioners pledged amounts to pay for the ground and, with the purchase of a brickyard in 1867, brick making began in earnest.

With the work for the new church building underway, a meeting was called for all the men of the parish, and two separate societies were formed. They were the St. Joseph's Building Society, "exclusively for the Germans" and St. Patrick's Benevolent Society, "exclusively English." The care of the Church of the Immaculate Conception fell to the St. Patrick's Society. The St. Joseph Building Society focused all of its resources — men, labor, materials and money — on the new church.

The surnames mentioned in the records of the building society include Ballhorn, Ballweg, Bange, Bast, Burkhard, Epping, Fischer, Foehrkolb, Gerber, Gremer, Haarmann, Harles, Hellrung, Rosipal, Schaefer, Schwartzkopf, Schwarz, Sido, Trares, Weber, Wieneke and many others. Those who could assist with monetary donations were usually men who had established themselves in the community and had thriving businesses, while others gave whatever assistance they could in labor and materials. Their goal was the same, a church of their own.

While the men were busy with the St. Joseph Building Society, the women were holding fairs to raise money for the new church building. In announcing the upcoming fair to be held by the "Catholic ladies" in December 1866, the *Edwardsville Intelligencer* encouraged the community to attend by stating that "there are other reasons why we should go there and



Original Church of the Immaculate Conception (St. Mary's), located on North Main Street in Edwardsville. (MCHS)

spend our mite since it is not for a private affair but for a community at home, for the glory of God, and for the glory of the citizens of Edwardsville, for erecting a suitable church edifice, that will contribute considerably to our own interest and to the view of this place."

On Jan. 1, 1869, the Rev. Anton Rustige was appointed pastor of St. Boniface, marking the beginning of the parish. He would lead the parish through the difficult process of building a church and creating a solid foundation for the continuation of the parish community.

In the spring of 1869, plans for the church building were submitted by architect Adolphus Druiding of St. Louis and the contract for the building was awarded to H. Melcher, also of St. Louis, for a cost of \$14,000.

On June 2, 1869, the cornerstone was laid by the Very Reverend Peter Joseph Baltes, of Belleville, Illinois, then administrator of the Diocese of Alton.

continued page 4

ABOUT US

MCHS BOARD

Candace Ladd, Pres
Gary Denué, V-Pres
Arnold Meyer, Treas
Tallin Curran, Sec
Norma Asadorian
Leslie Bednar
William Eaton
Mae Grapperhaus
Stephen Hansen
Murray Harbke
Don Huber
Lacy McDonald
Jeff Pauk
Cindy Reinhardt
Sue Wolf

STAFF

Jon Parkin
Museum Superintendent
Mary Westerhold
Archival Research Mgr.
LaVerne Bloemker
Archival Research Asst.
Carol Frisse
Archival Research Asst.
Jenn VanBibber
Curator
Mary Z. Rose
Asst. Curator

VOLUNTEERS

There are abundant and varied opportunities for volunteers at either the museum or the archival library. Please call if interested.

MEMBERSHIPS

Several membership levels are available to those interested in supporting the work of preserving Madison County history through an MCHS membership. Memberships run on the calendar year, Jan 1-Dec 31. Applications are available on our web site, at the MCHS Museum or at the Archival Library.

PUBLICATIONS

MCHS NEWS

6 issues annually
Cindy Reinhardt, Editor

ARCHIVAL LIBRARY SPOTLIGHT

By Mary Westerhold

In July, we lost one of our favorite patrons and donors, Harold Meisenheimer. Harold was not only a frequent researcher at the Archival Library; he was also the donor of over 30 scrapbooks, several books, and a wealth of information. If it happened in Alton, Harold either knew about it or would research until he found the information.

The scrapbooks he compiled include Alton history, veterans, and miscellaneous topics that captured Harold's interest. Another focus of the scrapbooks is the Owens-Illinois Glass Company. After Harold retired from there, he began to collect information on the company and several of his scrapbooks focus on the various plants and also feature obituaries of many of the workers. In addition, he donated his collection of the company newsletters.

The scrapbooks are currently being indexed to make them more user-friendly, but feel free to stop in and browse the collection. Harold enjoyed sharing information and would be happy to know that his years of compiling the scrapbooks is helping someone with their research.



*Harold Meisenheimer
(1927-2018)*

MUSEUM SPOTLIGHT

By Jenn VanBibber

A perennial favorite to visitors at the Madison County Historical Museum is a shoe that once belonged to Robert Wadlow. It is displayed next to a life-sized cutout of Wadlow. The size 37 shoe was made by the International Shoe Company out of St Louis, Missouri.

The Alton native was born Feb. 22, 1918. His size at the birth was typical of any other newborn, but at the age six months he weighed 30 pounds. By the time Wadlow turned 18, he was 8' 4" and weighed 390 pounds. According to the Alton Museum of Art and History, his shoes cost \$100 a pair.



Two years later, Wadlow toured the country for the International Shoe Company, and they provided his shoes at no cost. Robert Wadlow died July 15, 1940 at a Michigan hospital from an infection that developed from a blister on his foot. He was just 22 years old.

International Shoe Company (ISC) was once one of the largest shoe manufacturers in the world. Its roots trace back to the 1830s, but ISC was organized in 1911 when two of the largest shoe companies, Roberts, Johnson & Rand and Peters Shoe, merged. The company acquired four others businesses the next year. In the 1960s and 1970s, sales and production plummeted and factories moved or closed. ISC diversified in order to keep the company alive, but it eventually changed its name and left the footwear business. A developer has plans to turn one of the ISC buildings, on Washington Avenue in St. Louis, into a hotel. According to one news source, the owner has amassed a collection of shoes made by the International Shoe Company to decorate some of the space. The International Shoe Company donated one of Robert Wadlow's shoes to MCHS in 1968.

NEW MCHS MEMBERSHIPS

September is a great time to join MCHS or give a gift membership in the Society because it offers a little something extra. MCHS memberships run on the calendar year, from Jan 1 - Dec 31, but if you join in September-December, your membership will extend through the next year. If you are considering a gift membership, even if it's for Christmas, consider giving it now, so they can receive the extra newsletters and invitations. MCHS now has on-line membership application where you can join from the website or print a membership application. Applications are also available at the Archival Library.

THANKS TO GUEST AUTHOR

MCHS is very grateful to Mary Westerhold, the guest author for this issue of the MCHS News. Westerhold is the Archival Library's Research Manager and the unofficial historian for St. Boniface Catholic Church where she is a life-long member. She is an excellent historian and in her capacity as Research Manager at the library has helped hundreds of people find information on their Madison County families, their homes or businesses. Images, unless otherwise noted, are courtesy of St. Boniface Catholic Church

DINING IN HISTORY

Dining in History will this year be held at St. Boniface Catholic Church. The cornerstone for the church was laid in 1869 and over the years the parish has made art and architecture a priority. In addition to a delicious meal, participants will learn from Mary Westerhold about the art and architecture of the church in the context of history. Following the program, guests will be given a brochure to lead them through a self-guided tour of the building. St. Boniface Parish is to be commended for expanding their church while keeping the historic church as a part of their building; a beautiful blending of old and new. A ticket order form will be mailed later this month, or, guests may purchase tickets on-line at the MCHS web site.

WINDOW DEDICATIONS CONTINUE

Restoration of the windows at the Madison County Historical Museum has begun thanks to donations in memory of (or in honor of) current and past Madison County residents.

There are more windows which need sponsors, and whether your family is new to Madison County or has been here for generations, MCHS would love to tell your story. The cost to sponsor the restoration of a window is \$2,500.

Donors who sponsor complete restoration of a window will be recognized with their names on a plaque at the completed museum and with their stories included in a publication commemorating the Madison County families and businesses who contributed to the window restoration project. Of course, donations in any amount are welcome.

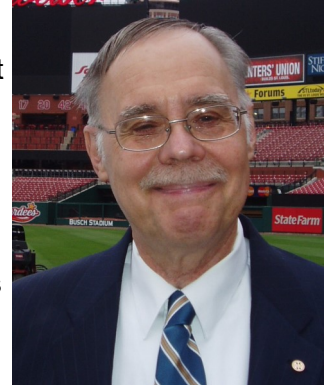
2018 MCHS SPEAKER'S SERIES

MADISON COUNTY DURING WW I

SUNDAY, OCTOBER 7 - 2 P.M.

ENERITUS PROFESSOR JAMES WEINGARTNER

Nov. 11, 2018 will mark the 100th anniversary of the end of World War I. That war was in many ways "the war that made the 20th century," but it has faded badly in the American collective memory. Some of us can remember when Nov. 11 was not "Veterans' Day," but "Armistice Day," marking the cease-fire that brought the unprecedented slaughter of World War I to an end. That observation ended way back in 1954, by which time World War II and the Korean War had supplanted "The Great War" in the national consciousness. There have been more wars since the armistice.



American participation in World War I was brief, approximately 19 months and less than half that in terms of actual involvement in large scale combat. Consequently, loss of American life was modest in comparison to that suffered by the warring European powers. Still, World War I was a momentous event in American history that cries out for remembrance. In this program, we will survey World War I as it was experienced by a small fragment of American society – Madison County, Illinois.

Please note that until further notice MCHS programs will be held at Immanuel United Methodist Church at 800 N. Main Street in Edwardsville which is directly across the street from the Archival Library.

MCHS AND SOCIAL MEDIA

Although MCHS is a historical society, we are also a modern organization with a digital footprint. The website (www.madcohistory.org) has recently been updated and the MCHS Facebook page (Madison County Historical Society) has recently seen an increase in traffic.

If you are a Facebook user, please "like" our page and share postings with your friends. Posts to the page include MCHS events, announcements from historical organizations throughout the county, and short stories about Madison County history. Content ideas are always welcome.

NEW AND RENEWING MEMBERS

July-August 2018 ♦ Thank you for supporting MCHS!

\$50 Family
St. Clair County
Historical Society

Glen Carbon Heritage
Museum
Scott & Peggy Hagin

\$35 Individual
Craig Becker
Mary Bohn

Shirley Ritchie
Terry Sharp

ST. BONIFACE: THE BEGINNING 1866 - 1873 (CONT FROM PAGE 1)

The occasion was duly reported by the *Edwardsville Intelligencer* in its June 10, 1869, issue. The account of the ceremony noted the procession to the new church grounds, a sermon in English, a sermon in German and finally, the laying of the cornerstone. But the last paragraph clearly identifies the feeling of the community toward the new church building:



*St Boniface Church
Circa 1894*

“The New Church, when completed will not only be a credit to the Catholic population, but an ornament to the town... If the building is completed according to plans, it will be the finest church in Madison County.”

On Sunday, Nov. 7, 1869, the ceremony of division took place. A procession formed at St. Mary's Church, which was at that time located on Main Street, approximately where the Wildey Theater sits today. With the Edwardsville Band in the lead, they marched to the new St. Boniface Church where the congregation was officially divided into two parishes - one for the Germans and one for the Irish.

While there was much work to be completed on the interior of the church, parish life was already busy. The first baptism recorded in the

books was on Jan. 1, 1869, and the first marriage was on July 22, 1869. In May 1870, Bishop Baltus administered



Combination rectory and school built 1871

confirmation to a class of 142. In September 1870, the bishop returned to bless two bells.

Even though the interior of the church was not yet completed, the parish families invested in education for their children. A combination rectory and school was completed in 1871. The first floor was used as a school while the second floor was the pastor's residence.

Plastering of the interior of the church was completed in 1872 and the church was officially dedicated in August 1873. Just a few months later in November 1873, Father Rustige, whose health had suffered from typhoid fever, retired to St. Mary's Infirmary in St. Louis where he died in 1874 at the young age of 33. His last contribution to the parish was a bequest of \$1,000 in his will.

1874 - 1896: A NEW SCHOOL

The next several years saw a succession of pastors whose tenures lasted only a few months. These included the Rev. Charles Oberprantacher, the Rev. John Mark, the Rev. Charles Kuhlman, and the Rev. J. Neuhaus. In 1876, the Rev. Gerhard Jansen was appointed pastor and stayed for four and half years. In January 1881, the Rev. Jansen exchanged places with the Rev. Augustine Schlegel of Mt. Carmel, Illinois.

The Rev. Schlegel remained at St. Boniface for over 15 years and did much to advance the young parish. His first project was to build a new school building. In 1881, classes were still being held on the first floor of the rectory and additional space was needed. A new school building was needed and planning began immediately. As with the building of the church,

the parishioners held fairs and contributed labor and materials to complete the school. On Thanksgiving Day, 1882, the new school was dedicated. In years to come,

this building would serve many purposes in the parish, including a convent, meeting rooms for Boy Scouts and Girl Scouts, a band rehearsal room, and a kindergarten. It was razed during the campus renovations of Project 2000.

Father Schlegel's pastorate resulted in other improvements including a new high altar, a steam heating system, a pipe organ, and a four room home for the Sisters who taught at the school. In 1896 on Rev. Schlegel's last Easter at St. Boniface, statues of the Sacred Heart and St. Francis of Assisi were dedicated.



1882 St. Boniface Catholic School

1896 - 1918: A LARGER SCHOOL, THE 1915 TORNADO AND WW I

In May 1896, the Rev. Joseph Metzler was appointed pastor. His years as pastor saw many updates to the parish buildings including electrical lighting in the church, stained glass in the sanctuary, two additional bells in the steeple (bringing the total to four), installation of a telephone in the rectory, and an addition to the Sister's house.

A major project during Father Metzler's pastorate was replacing the 1882 school building with a new and larger school. A building committee was assembled and they began reviewing local schools. Construction began in 1912,



School Dedicated in January 1913

and the school was dedicated in January 1913. Initially, the only classrooms were the four on the first floor. The lower level was to be used as recreation rooms when the students could not go outside for recess. The second

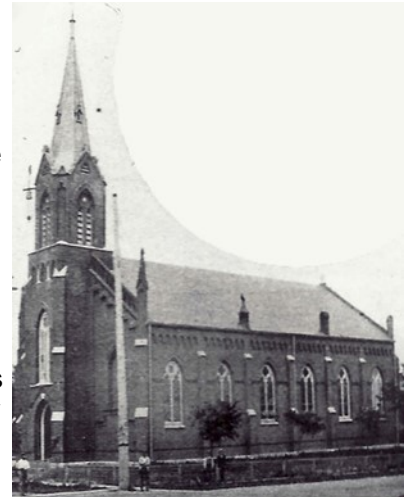
floor was a large auditorium with a stage and a balcony. The dedication ceremony concluded in the evening with speeches, various musical selections performed by the Schwarz Orchestra, songs and recitations by the school children and finally, "Old Glory", described by the *Intelligencer* as "a patriotic operetta in two acts."

In 1915, land was purchased for the St. Boniface Cemetery. Prior to this, most parishioners were buried in St. Mary's Cemetery.

That year also saw a modification to the exterior of the church. A tornado struck Edwardsville during a Sunday service and Rev. Metzler stopped the service and asked everyone to kneel and pray. The small spires that had adorned the corners of the church were damaged and never replaced.

When the United States entered World War I, a new era of fervent patriotism quickly evolved into strong anti-German sentiment. Father Metzler was a native of Germany, and like so

many others, became the target of this anti-German sentiment when he was accused of being unpatriotic. The situation worsened and after an extended leave of absence, the Bishop accepted his resignation as pastor in 1918. The Rev. Clemens Stolze, the first St. Boniface parishioner to be ordained a priest, was appointed the temporary pastor.



Church exterior before the 1915 tornado

1919 - 1961: YEARS OF GROWTH

1919-1954

The Rev. Ernest Eckhard began his pastorate in May 1919 and immediately set to work. Pew rent was abolished and the weekly envelope system established. In addition, the cost of maintaining the school and providing an education for parish children became the responsibility of all parishioners, not just the parents of those students. The 1882 school building was remodeled as a convent for the Sisters.

A few years later in 1924, extensive termite damage was discovered in the church requiring major repairs including replacement of several pillars, installation of a new floor, and renovation of the pews. The building was not safe for use, so mass was said in the School Hall during the repairs. In addition to the necessary repairs, the Choral Club purchased a new organ for the church.

In 1928 the school basement was remodeled, including the installation of a four lane bowling alley. At the grand opening on August 2, Father Eckhard emphasized that the alleys were open for both men and women.

The late 1940s and early 1950s saw additional remodeling of the school as the enrollment rose to new record levels. The enrollment for the fall of 1950 was 280, an increase of 45 from the previous year's record enrollment of 235. The hall/auditorium on the second floor was remodeled into 4 classrooms. The bowling alley was removed from the

basement and a new kitchen and a large dining area were created which could also be used as a large meeting area for parish events and receptions.

Father Eckhard was always very involved with the school. He frequently taught catechism in the school and encouraged all

forms of education. The St. Boniface Band was created in 1936 to provide musical education for any who wanted it. Catholic education beyond eighth grade was another of Father Eckhard's passions. St. Boniface graduates began attending St. Paul High School in Highland. To facilitate this, a bus was purchased to provide transportation to and from Highland.

On June 9, 1951, Father Eckhard celebrated his 45th anniversary as a priest and 32nd year as pastor with a



School Band circa 1947

Continued on page 6

1919 - 1961 (CONTINUED)

commemorative banquet. With Father Eckhard's health failing, the Rev. Anthony Capanis, the assistant pastor, was appointed administrator of the parish. Father Eckhard spent much of the next few years in hospitals until his death in January 1954. He lay in state in the church and was buried in St. Boniface Cemetery, the only priest buried there.

1954-1961

The Rev. George Faller was appointed pastor in March 1954. That year saw the first Midnight Mass at Christmas. The mass was held by candlelight. However, after the mass, the congregation was told that the candlelight was not

planned, but due to a power failure!

Father Faller's pastorate saw the construction of a new convent. Work began in 1958 and the building was dedicated on June 5, 1960, by Bishop William O'Connor. After the dedication of the convent, the Bishop administered the sacrament of Confirmation to 110 fifth and sixth graders and 23 adults.

During the last year of Father Faller's time at St. Boniface, the old convent (1882 school) was remodeled into the "Parish House" to be used for band rehearsals and small meetings.

1961 - 1985: VATICAN II, ANOTHER TORNADO, THE CONVENT CLOSES

1961 - 1969

Father Ralph Guido was named pastor in November 1961. Just a few months later in January 1962, the first dialogue mass was said. The church was remodeled with terrazzo floors, new pews, and new stained glass windows. Chimes were placed in the sanctuary. In addition, air conditioning was installed in the church.

During the summer of 1962, major remodeling was completed in the school with much of the work being completed by men of the parish.

Vatican II brought about many changes in the liturgy and also in the church building itself. With masses now being said with the priest facing the congregation, a temporary altar was placed in the sanctuary. In 1969, the last year of Father Guido's pastorate, the sanctuary was renovated.

The old high altar was removed and a new marble altar replaced the temporary altar. The side altars were removed and replaced with a tabernacle and a baptismal font. A marble communion rail and pulpit were added.

1969 - 1973

Father William Stanley arrived at St. Boniface in April 1969. His first task was the completion of the renovations in the sanctuary. The Parish house was remodeled to be used as a kindergarten, in addition to band rehearsals and meetings.

In October 1969, the 100th anniversary of the parish was celebrated beginning with a mass presided over by Bishop O'Connor. A public reception was held after the mass with a history of the church on display.

1973 - 1978

The year 1973 saw Father William Maul installed as the new pastor. The rectory, built in 1871, was razed and replaced with a larger rectory in 1975. The new rectory contained living quarters for two priests, office space, and a lower level designed as a meeting and fellowship space and included a kitchen and restrooms.

1978 - 1985

Father Robert Meyer succeeded Father Maul in June 1978. During Father Meyer's time, a Parish Council was established consisting of several committees to review all facets of the parish.

A tornado again struck Edwardsville in 1981 and the cross on the steeple was damaged. It was removed and repaired. In addition, the church, school, and parish house were tuckpointed.

A plan to redecorate the church and build a Parish Center which would include a gym was presented to the Bishop. In August 1982, the Bishop gave the parish permission to start raising money for the projects. Redecorating of the church began in January 1985 and groundbreaking for the Parish Center was in March 1985. The work in the church was completed in April 1985.

1985 - 1995

A new pastor, Father William Kekeisen, was assigned on July 23, 1985. The Parish Center was dedicated by Bishop Daniel Ryan in November. Father Kekeisen remained but a short time at St. Boniface, leaving in the spring of 1988.

Father Charles Dahlby arrived in September 1988. He restructured the Pastoral Council and made updates to the school building.

With only two sisters remaining in residence, a house was rented for them and the convent was rented to the Madison County State's Attorney's Office.

In the fall of 1994, Father Dahlby accepted an appointment outside the Springfield Diocese. Father Gerald Bunse of St. Mary's Parish was appointed administrator of St. Boniface.

With a growing shortage of priests, the Diocese began exploring various ways to meet the needs of parishes. Discussions were held regarding combining the two parishes in Edwardsville. After several months, it was decided to retain both parishes.



The old church altar

1985-PRESENT: CONTINUED GROWTH WITH PROJECT 2000

1995 - 2007

Father John Corredato, Cleric of St. Viator, became the new pastor of St. Boniface on July 4, 1995. He tasked the Pastoral Council with defining a vision for the future of the parish. As a result, the convent, once again empty, was remodeled to be used as a preschool, and rooms in the school were remodeled to accommodate an all-day kindergarten, a music room, and a library.

Another committee, Project 2000, was formed to continue the planning for the facilities. A plan for further expansion of the parish facilities was developed and fundraising began in 2000. A larger church was needed. The new church would be attached to the current church. The current church would be used as a chapel for daily masses and small funerals and weddings. But several steps had to be completed before the new church would be a reality.

A preschool was built next to the Parish Center/gym. The convent, which was most recently used as the preschool, was remodeled for use as the parish office. A house was purchased on Fillmore Street as a rectory, since the current rectory would be razed. The Parish House was also razed. The new preschool was completed in September 2001.

On Jan. 27, 2002, Bishop Lucas came for the official groundbreaking for the construction of the new church. With the exception of the summer months, masses were held in the "old" church during construction. During the summer, masses were held in the Parish Center/gym. For a few weekends in October and November 2003, masses were held in the lower level of the new church. The new church was dedicated on Nov. 11, 2003 with Bishop George Lucas presiding.

Within a few years, updates began on the school with updated electrical service installed first. This was followed by additional computers and window air conditioners for each classroom and office. Remodeling of the classrooms began in the summer of 2006 with the eighth-grade classroom followed by the seventh-grade classroom over Christmas break.

2007 - Present

In the summer of 2007, Father Corredato accepted an assignment at the Cathedral of the Guardian Angels in Las Vegas and Robert Mehelic retired as principal of St. Boniface School. Father Jeffrey Goeckner became the new pastor in July 2007.

With the retirement of the school principal in May 2007, Father Goeckner began a search for a new principal. Sister Anna Flanagan of the Sisters of St. Francis of the Immaculate Conception was hired as the new principal. In addition, Sr. Kathleen Ann Mourisse was hired to teach art and help with religious education and liturgical planning. To accommodate the sisters, a house was purchased for Father Goeckner, and the sisters moved into the former rectory on Fillmore Street.

While the school building remodeling continued on schedule, additional work was planned including installing a new roof and windows, remodeling the remainder of rooms and hallways, and replacing the exterior doors. Father Jeff continued to assess the physical needs of the parish beginning with a campus-wide cleanup day to deep clean the sisters home, revive the landscaping, and clean storage rooms in the church and parish office.

New committees were formed to help determine the needs of the parish. A Ministry Fair was held to inform parishioners of the many opportunities to volunteer within the parish community. Additional projects were completed to enhance and upgrade the whole parish campus. One of the most visible enhancements to the property was the Statue of St. Boniface near the new Buchanan Street entrance, which was dedicated to the memory of Father John Corredato who lost his battle with cancer shortly after leaving St. Boniface. Other projects included resurfacing and reconfiguring the parking lot, remodeling the parish office, upgrading the lighting on the property, and installing new fencing and playground equipment for the school.

On Dec. 31, 2008, a New Year's Eve celebration was held for the parish to ring in 2009 and a year-long celebration of the 140th anniversary of the parish.

Continued on page 6



Parishioners pose for a photo during the 140th Anniversary Celebration



Madison County Historical Society

Opening Doors to Madison County History

801 N. Main Street
Edwardsville, IL 62025

Address Service Requested

PRSR STD
Non-Profit
Organization
U.S. Postage
Paid
Permit #9
Edwardsville, IL
62025

MCHS CALENDAR

**SUNDAY, OCT 7
2 P.M.**

WORLD WAR I AND MADISON COUNTY

**PRESENTER: EMERITUS PROFESSOR JAMES
WEINGARTNER
(FREE SPEAKER'S SERIES)**

SUNDAY, NOV 4

DINING IN HISTORY

**ST. BONIFACE CATHOLIC CHURCH
EDWARDSVILLE, ILLINOIS
PROGRAM BY MARY WESTERHOLD**

**TICKETS AVAILABLE
ONLINE OR AT 618-656-7569**

**SPEAKER'S SERIES LOCATION:
IMMANUEL UNITED METHODIST CHURCH
800 N. MAIN STREET, EDWARDSVILLE,
LOWER LEVEL
ENTRANCE ON SOUTH SIDE**

MARY'S RESEARCH TIP

The last decade has seen an explosion of online resources for family history, or any other research. However, not every source you need is online and many sources will never be online. Genealogical and historical societies have been compiling records for many years before the internet and many of these records include additional information regarding a family, location, or event that was added by those who know the local history. So when researching, be sure to visit or contact the local public library, genealogical, and historical collections to see what information is available.

ST. BONIFACE TODAY (CONT. FROM PAGE 7)

In January 2011, a Hispanic ministry began at St. Boniface. A mass was added to the weekend schedule with the liturgy in Spanish. Initially, the mass was held in the chapel but the Hispanic community has outgrown the chapel and now the mass is held in the church and draws Hispanic-Catholics from several communities.

With the planning underway for the 150th anniversary celebration in 2019, St. Boniface is again looking to the future and planning for expansion of the school and renovations of the church. Once again, the St. Boniface parish community is working toward "Preserving our Past, Forming Our Future."



The new St. Boniface sanctuary